

Board of Trustees

Ellis V. Bringhurst
Arlen F. Ekberg
James L. Wright

Cottonwood Improvement District

8620 South Highland Drive
Sandy, Utah 84093
Telephone (801) 943-7671
Fax (801) 943-1077

General Manager

James E. Faulkner

Legal

Gerald H. Kinghorn

Engineer

Gregory B. Neff

Confined Space Entry

Do to the extraordinary hazards personnel face when working in Confined Spaces, Cottonwood Improvement District is instituting a Contractor Confined Space Program. This program is required by Code of Federal Regulations (CFR) Title 29, Volume 51, Part 1910.146 Permit Required Confined Spaces.

Cottonwood Improvement District's Rules and Regulations states: ...any manhole with a live sewer line running through it or dead ending in it, is a Permit Required Confined Space. Any work to be done, including but not limited to, tying in new sewers to existing live sewers, remodeling of a manhole, sewer line or invert, is to be done in accordance with Permit Required Confined Space rules.

In compliance with Code of Federal Regulations (CFR) Title 29, Volume 51, Part 1910.146 Permit required confined spaces. Section 8 pg. 471 states: ...When an employer (Host Employer) arranges to have employees of another employer (Contractor) perform work that involves permit space entry, the host employer shall:

(i) Inform the contractor that the workplace contains permit required confined spaces and that permit space entry is allowed only through compliance with a permit space program meeting the requirements of part 1910.146.

(ii) Appraise the contractor of the elements, including the hazards identified and the host employer's experience with the space, which makes the space in question a permit space.

(iii) Appraise the contractor of any precautions or procedures that the host employer has implemented for the protection in or near permit spaces where the contractor personnel will be working.

(iv) Coordinate entry operations with the contractor when both host employer personnel and contractor personnel who will be working in or near permit spaces, as required by paragraph (d) (11) of this section, and

(v) Debrief the contractor at the conclusion of the entry operations regarding the permit space program followed. Inform the host regarding any hazards confronted or created in permit spaces during entry operations.

Section 9, pg. 471 States: In addition to complying with the permit space requirements that apply to all employers, each contractor who is retained to perform permit space entry operations shall:

(i) Obtain available information regarding permit space hazards and entry operations from the host employer.

(ii) Coordinate entry operations according to Section 8 part (iv) above.

(iii) Inform the host employer of the permit space program that the contractor will follow and any hazards confronted or created in the permit spaces, either through a debriefing or during the entry operation.

(d) Permit required confined space program (permit space program) under the permit space program required by paragraph (c) (4) of this section, the employer shall follow all of the provisions set forth in the section.

By signing below you acknowledge and agree to follow all the Permit required Confined Space Regulations stated in the Code of Federal Regulations (CFR) Title 29, Volume 51, Part 1910.146, Permit Required Confined Spaces.

Contractor's Authorized Signature

Date

HAZARDOUS ATMOSPHERES IN CONFINED SPACES

USE AN AIR DETECTOR TO TEST FOR THE FOLLOWING HAZARDS:

- 1) OXYGEN DEFICIENCY
- 2) COMBUSTIBLE GAS
- 3) TOXIC GAS

BE AWARE OF HAZARDOUS ATMOSPHERES IN THE FOLLOWING PLACES:

- 1) MANHOLES
- 2) POORLY VENTILATED AREAS
- 3) SLOW AND/OR FULL SEWER PIPES
- 4) NEAR BLOCKAGES
- 5) WET PITS, SIPHONS AND BACKED UP MANHOLES
- 6) NEAR INDUSTRIES

OXYGEN DEFICIENCY

OXYGEN DEFICIENCY IS LOCATED IN POORLY VENTILATED AREAS, SUCH AS MANHOLES, WET PITS AND SIPHONS. IT IS CAUSED BY ANOTHER GAS, LIKE CARBON DIOXIDE, DISPLACING THE OXYGEN. TESTS NEED TO BE MADE AT ALL DEPTHS TO BE SURE THE ATMOSPHERE IS SAFE.

TOXIC GASES

GASES SUCH AS HYDROGEN SULFIDE ARE TOXIC, ALONG WITH SOME INDUSTRIAL WASTES. SPECIAL CARE NEEDS TO BE TAKEN WHEN WORKING NEAR INDUSTRIES.

COMBUSTIBLE GASES

IF NATURAL GAS, GASOLINE OR ANY OTHER COMBUSTIBLE GAS IS DETECTED, NOTIFY SUPERVISOR IMMEDIATELY.

REMEMBER:
ALWAYS FOLLOW THE
COTTONWOOD IMPROVEMENT DISTRICT
CONFINED SPACE ENTRY PROCEEDURES

SYMPTOMS THAT SOMETHING IS WRONG IN A CONFINED SPACE

- 1) DIFFICULTY IN BREATHING.
- 2) RINGING IN THE EARS.
- 3) FEELING NAUSEATED.
- 4) DIZZINESS OR FEELING LIGHTHEADED.
- 5) COUGHING.
- 6) SMELL OF ROTTEN EGGS.

IF YOU ENCOUNTER ANY OF THESE SYMPTOMS, GET OUT IMMEDIATELY. DO NOT RE-ENTER UNTIL AREA IS PROPERLY VENTILATED AND AIR QUALITY IS CHECKED – THEN CONTINUE TO VENT.

MANHOLE ENTRY

- 1) EMPLOYEES WILL NOT ENTER A MANHOLE UNLESS A FELLOW EMPLOYEE IS PRESENT.
- 2) EMPLOYEES WILL NOT ENTER A MANHOLE WITHOUT WEARING A SAFETY HARD HAT, HARNESS, TRIPOD AND AIR DETECTOR.

USING A HARNESS

- A) ALWAYS WEAR A HARNESS. THIS ALLOWS YOU TO GET PULLED OUT IF YOU GET INTO TROUBLE.
- B) PUT THE HARNESS ON PROPERLY, GET A GOOD FIT.
- 3) WHEN USING A LADDER, THERE MUST BE A FELLOW EMPLOYEE SUPPORTING THE LADDER BEFORE AN ATTEMPT IS MADE TO CLIMB UP OR DOWN. ANYTIME – ANYPLACE.
- 4) FOR EXTENDED NIGHT OPERATIONS, ADEQUATE LIGHTING SHOULD BE PROVIDED IN THE VICINITY OF OPEN MANHOLES.
- 5) ALWAYS INSPECT THE INTERIOR OF A CONFINED SPACE WITH DIRECT SUNLIGHT OR ARTIFICIAL LIGHT TO ASSURE NO BUILDUP OF SLUDGE OR DECAYING MATERIAL IS PRESENT WITHIN THE CONFINED SPACE. IF THERE IS, WASH DOWN THE AREA, AND THEN TEST THE AIR.

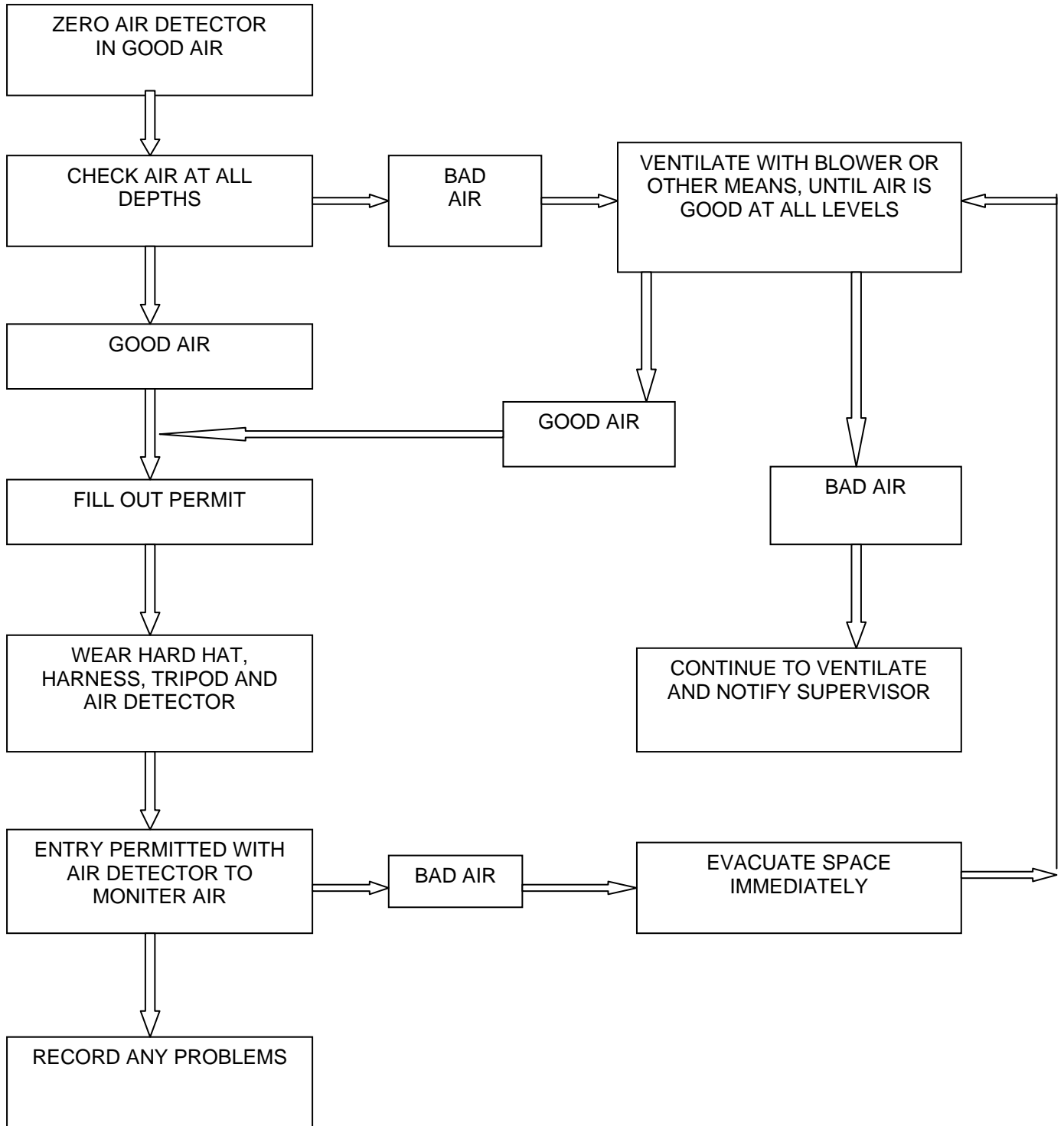
TO AVOID MANHOLE FALLS

- 1) BEWARE OF OLD STEPS.
- 2) USE A HARNESS.
- 3) TRIPOD.

FALLING OBJECTS

- 1) KEEP TOOLS AWAY FROM MANHOLE.
- 2) LOWER TOOLS IN A BUCKET; DON'T DROP THEM DOWN THE MANHOLE.
- 3) USE NAP STRAP TO HOLD YOUR HARD HAT ON.

Confined Space Flow Chart



Sample

CONFINED SPACE ENTRY PERMIT

Date: _____

Location of Space or Manhole: _____

Purpose for Entering Space or Manhole: _____

Employees Performing Work:

_____	_____
_____	_____
_____	_____

PRECAUTIONS

Yes No

Employee qualified? _____

Safety observer? _____

Space/Manhole clean? _____

Space/Manhole air
Safe for entry? _____

Forced ventilation needed? _____

PROTECTIVE EQUIPMENT USED

Yes No

Hard hat/Harness/Life line? _____

Breathing apparatus? _____

Lock out devices? _____

Space/Manhole air
continuously monitored? _____

MISCELLANEOUS EQUIPMENT USED:

Name of Safety Observer: _____

Issued by: _____

Date: _____